



ABOUT US

PROJECT  
DETAILS

AMENITIES

FLOOR  
PLANS

LOCATION  
PLAN



PR BUILDERS • 1964

WELCOME TO THE INNER CIRCLE



All approvals including commencement certificate received. FSI fully loaded.

# IPLATINA

3 / 4 Bedroom Exclusive Apartments at  
East Avenue, Santacruz (W), Mumbai



ABOUT US

PROJECT  
DETAILS

AMENITIES

FLOOR  
PLANS

LOCATION  
PLAN



PR BUILDERS • 1964

WELCOME TO THE INNER CIRCLE

Based in bustling Mumbai, the financial capital of India, PR Builders is a boutique real estate development firm that was established in 1964. The Company has come to be known for its commitment to its customers, high quality construction, innovative design and well thought-out, efficient planning.

The company was founded by Late Mr. Chaturbhuj R. Wadhvani and Mr. Niranjn Wadhvani who were subsequently joined by their sons, Ajay and Avinash, respectively.

Over the years, PR Builders have undertaken and completed projects in areas ranging from South Mumbai to Virar, including several in Bandra, Khar and Santacruz West.

Surely, a cut above the rest, the Company is known for creating practical commercial spaces and luxury abodes that dreams are made of, in the most sought after locations. PR Builders have an unmatched reputation of over 5 decades with a 100% rate in obtaining O.C., and at the same time, providing timely delivery, always.

Over the years, P. R. Builders has consciously retained it's focus on presenting premium residential apartments and projects. The Company's biggest strength is it's wealth of experience, vast bank of knowledge and a personal involvement in all aspects of the entire project.

### SOME COMPLETED PROJECTS



**CHITRA**  
West Avenue, Santacruz (W)



**JOLLY FRIENDS**  
15th Road, Bandra (W)



**SOHAM APARTMENTS**  
Teen Batti, Walkeshwar



ABOUT US

PROJECT  
DETAILS

AMENITIES

FLOOR  
PLANS

LOCATION  
PLAN



# PLATINA

3 / 4 Bedroom Exclusive Apartments at  
East Avenue, Santacruz (W), Mumbai

## OUR COMMITMENT TO YOU

'Platina', your home so beautifully set in a tranquil, convenient and secure neighbourhood! A project that is an ideal blend of being in a purely residential locality but within easy access to all kinds of markets and commercial activity. Centrally located, Platina is on East Avenue, Santacruz (W), only a short distance from busy, commercial zones and only a stone's throw away from important conveniences. Apart from being within a short driving distance from clubs and gymkhanas, it provides convenient connectivity to airports, schools, colleges, hospitals, malls, markets, upmarket shopping localities and railway stations.

The project has a very distinct elevation that will lend personality to the neighbourhood. Platina is a luxury project that will have one apartment per floor, very practically designed to maximise space. It comes with modern, premium fittings, beautiful views and an abundance of natural light. Common amenities include a well-equipped Gym that can help you unwind or meet your fitness goals, all the same.

When you are seeking the best for your loved ones, Platina goes all the way to make every day a celebration for them! Get them ready for an unmatched experience, for life. Start counting your blessings, at Platina!

Project approved by HDFC, paving the way forward for easy home loans



Actual photographs, MEERA at Santacruz (W)



ABOUT US

PROJECT  
DETAILS

AMENITIES

FLOOR  
PLANS

LOCATION  
PLAN



# PLATINA

## GENERAL AMENITIES

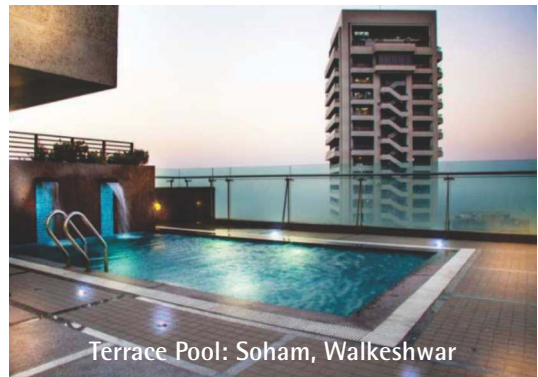
- Fully equipped Gymnasium
- Decorative double height entrance lobby with Reception Desk and Waiting Area for guests
- 3-level Car Parking; 2 Car Lifts
- 3 modern, high-speed elevators
- Decorative Staircase and Floor Landings
- Exclusive Servants Toilet at each mid-landing
- Video Phone Security System
- Paving in entire compound
- Fully equipped Terrace with Banquet facilities, Bar Counter, Flower Beds, Lighting, etc.
- Society Office/ Business Centre
- Peaceful, quiet neighbourhood
- Convenient access to Airports, Railway Stations, Hotels, Cinemas, Banks and Market

## APARTMENT AMENITIES

- 3-Bed Room Terrace Flat & 4-Bed Room exclusive apartments with private decks
- One flat per floor with a private elevator – the entire floor is yours
- Efficient space planning, maximising each room
- International designs
- Separate room for your house help
- Imported Marble Flooring
- Modern False Ceiling in living room & bed rooms
- 2 split Air-conditioners in living room
- Ceiling Fans in all rooms
- Adequate electrical points, including TV, Telephone & Internet
- Modular Kitchen with Hob, Chimney Microwave, Refrigerator
- Designer bathrooms with Jaquar/ Grohe fittings, T. Glass Cubicals
- Exhaust Fans in Wash Rooms



Sky Deck: Jolly Friends, Bandra (W)



Terrace Pool: Soham, Walkeshwar



Entrance Lobby: Chitra, Santacruz (W)



Living Room: Soham, Walkeshwar



Lobby: Jolly Friends, Bandra (W)



Gym: Jolly Friends, Bandra (W)



ABOUT US

PROJECT  
DETAILS

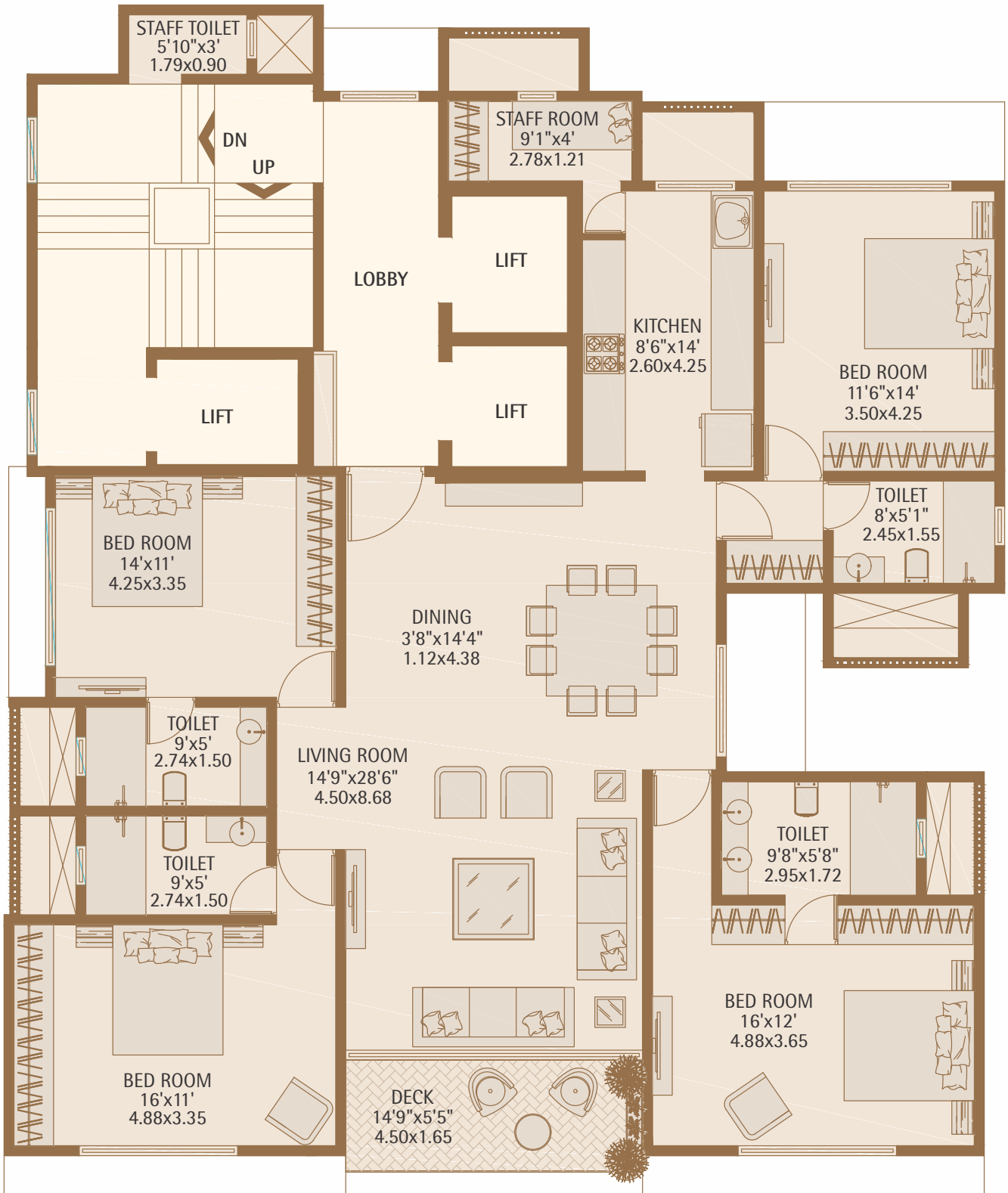
AMENITIES

FLOOR  
PLANS

LOCATION  
PLAN



### Typical Floor Plan, 4 BHK, 8th to 13th floors





ABOUT US

PROJECT  
DETAILS

AMENITIES

FLOOR  
PLANS

LOCATION  
PLAN



### Floor Plan, 3 BHK, 14th floor





ABOUT US

PROJECT  
DETAILS

AMENITIES

FLOOR  
PLANS

LOCATION  
PLAN



## LOCATION MAP



All information, particulars and illustrations contained herein are for reference only and shall not constitute or be construed as giving any offer, representation or warranty whether expressly or implicitly. Whilst every reasonable care has been taken in preparation of this document, the Vendor, its representatives or agents shall not be responsible for any inaccuracies and omissions. Interested persons are advised to make their own enquiries and satisfy themselves in all respects. The information in this brochure is indicative of the development that is proposed. The developer reserves the right to change or alter the layout, plans, specifications or features without prior notice or obligation.

MahaRera Registration No.  
P51800029731



PR BUILDERS • 1964

WELCOME TO THE INNER CIRCLE

Prahladrai Ramchand Builders  
1st Floor, Ashiana, 87, Linking Road, Santacruz (West), Mumbai - 400 054

Tel.: +91 2600 0534, +91 2646 0695, +91 2605 2223 | Email: [enquiries@prbuilders.co](mailto:enquiries@prbuilders.co) | Web: [www.prbuilders.co](http://www.prbuilders.co)